

ENGLISH

DIRECTIONAL GRID SHOWER HEAD

Characteristics : Adjustable shower jet angle at 17° and 25°. Delivered at 17°. Option flow rate regulator 8 or 10 l/mn

- A - Concealed mounting
- B - Surface mounting
- C - In-duct mounting
- D - Moistening zone with 17° angle
- E - Moistening zone with 25° angle
- F - Setting and modification of the spray angle 17° / 25°
- G - Setting
- H - Concealed mounting
- I - In-duct mounting
- J - Surface mounting
- K - Flow rate regulator setting
- L - Flow rate chart
- M - Concealed version without regulator
- N - Surface mounting without regulator
- O - Regulator

ITALIANO

SOFFIONE A GRIGLIA ORIENTABILE

Caratteristiche : Angolo del getto regolabile a 17° o 25°. Fornito a 17°. Limitatore di portata 8 o 10 l/min (optional).

- A - Soffione ad incasso.
- B - Soffione pronto per l'installazione.
- C - Soffione dietro parete.
- D - Superficie di caduta dell'acqua con angolo di 17°.
- E - Superficie di caduta dell'acqua con angolo di 25°.
- F - Installazione e variazione d'angolo regolabile della griglia doccia 17°/25°.
- G - Montaggio
- H - Soffione ad incasso.
- I - Soffione dietro parete.
- J - Soffione pronto per l'installazione.
- K - Montaggio limitatore di portata.
- L - Curva di portata.
- M - Versione ad incasso.
- N - Versione a muro.
- O - Limitatore di portata 10 l/min.

Ce document n'est pas contractuel; nous nous réservons le droit de modifier les caractéristiques de nos produits sans préavis. This is not a contractual document. We reserve the right to change the specifications of our products without prior notice. Dies ist kein vertragliches Dokument; wir behalten uns das Recht vor, die Eigenschaften unserer Produkte ohne Vorankündigung zu ändern. Dit is geen contractueel verbindend document; wij behouden ons het recht voor de kenmerken van onze producten zonder waarschuwing te veranderen. Questo documento non costituisce un contratto; ci riserviamo il diritto di modificare le caratteristiche dei nostri prodotti senza preavviso.

DEUTSCH

BRAUSEKOPF MIT ORIENTIERBAREM STRAHL

Technische Angaben: Strahlwinkel, auf 17° oder 25° einstellbar. Bei der Lieferung auf 17°. Mengenbegrenzer 8 oder 10 L/Min lieferbar

- A - Brausekopf für U/P anschluss
- B - Brausekopf für A/P anschluss
- C - Brausekopf für TC anschluss
- D - Vasszone bei Winkel von 17°
- E - Vasszone bei Winkel von 25°
- F - Änderung des Winkels 17° / 25°
- G - Montage
- H - Brausekopf für U/P anschluss
- I - Brausekopf für TC anschluss
- J - Brausekopf für A/P anschluss
- K - Montage des Mengenbegrenzers
- L - Leistungsdiagramm
- M - U/P Aussföhrung
- N - A/P Uussföhrung
- O - Mengenmegrenzer 10 L/Min

DUTCH

DOUCHEKOP MET DRAAIBAAR ROOSTER

Eigenschappen : Proeihoek in te stellen op 17° of 25°. Geleverd op 17°. Optie capaciteit begrenzer 8 of 10 l/min

- A - Ingebouwde douchekep
- B - Direct te monteren douchekep
- C - Douchekep met muurdoorvoering
- D - Sproei patroon met een hoek van 17°
- E - Sproei patroon met een hoek van 25°
- F - Montage en wijziging sproeihoek van het doucherooster 17°/25°
- G - Montage
- H - Ingebouwde douchekep
- I - Douchekep met muurdoorvoering
- J - Direct te monteren douchekep
- K - Montage capaciteit begrenzer
- L - Capaciteitgrafiek
- M - Inbouwmodel
- N - Model met muurmontage
- O - Begrenzer 10 l/min.

Edition 02-03 REF N 735.7 03-02

NOTICE D'INSTALLATION INSTALLATION GUIDE

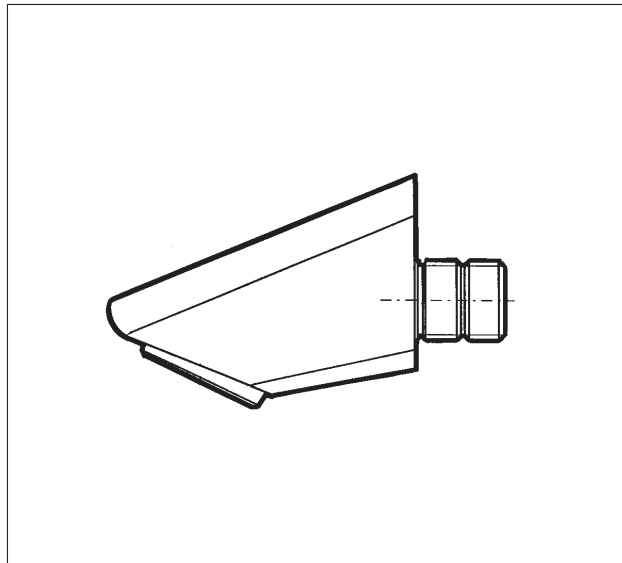
PRESTO®

robinetteries à fermeture automatique temporisée

DOUCHES

SHOWERS

Pomme de douche grille orientable
Directional grid shower head



LES ROBINETS PRESTO

7, rue Racine - B.P. 551 - 92542 MONTROUGE Cedex FRANCE

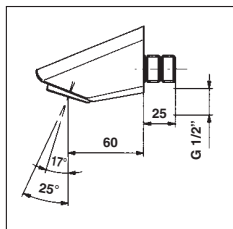
Tél. : +33 (0) 1 46 12 34 56 - Fax : +33 (0) 1 40 92 00 12

Internet : <http://www.presto.fr>

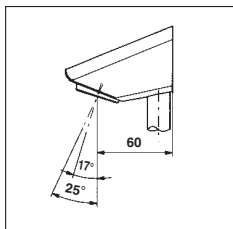
POMME DE DOUCHE GRILLE ORIENTABLE

Caractéristiques : Angle de jet indexable à 17° ou 25° / Livré à 17°
Option limiteur de débit 8 ou 10 l/mn

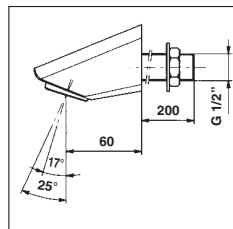
Pomme de douche encastrée (A)



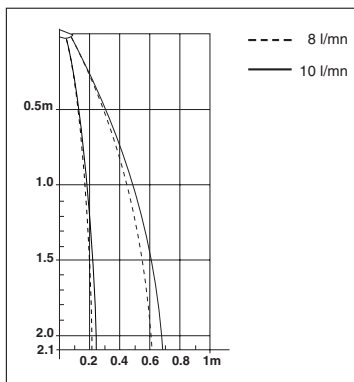
Pomme de douche PAP (B)



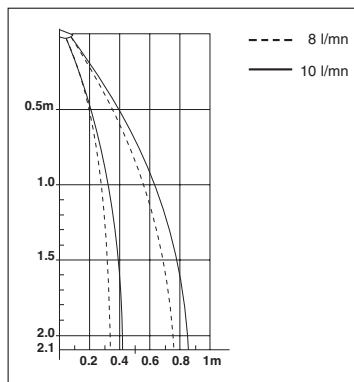
Pomme de douche TC (C)



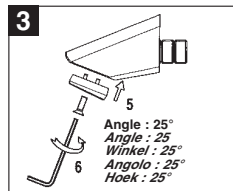
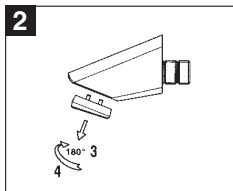
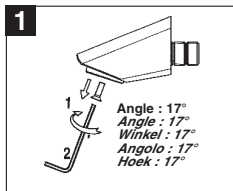
Zone de mouillage avec angle 17° (D)



Zone de mouillage avec angle 25° (E)

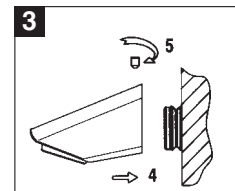
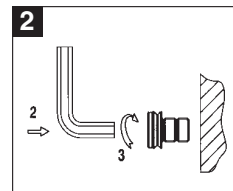
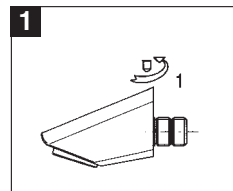


Pose et changement d'angle indexable grille de douche 17° / 25° (F)

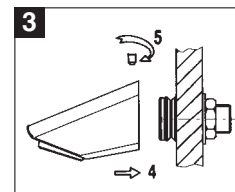
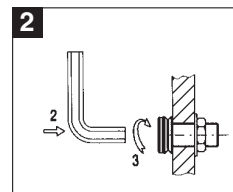
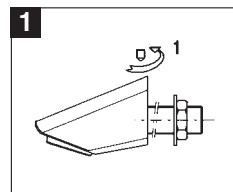


MONTAGE (G)

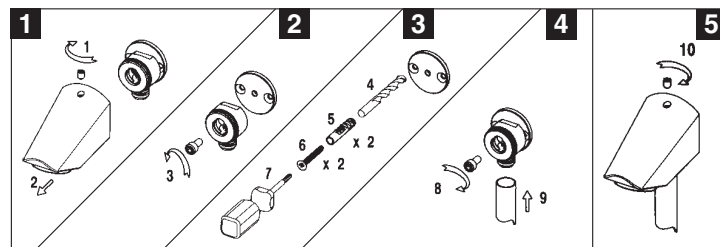
Pomme de douche encastrée (H)



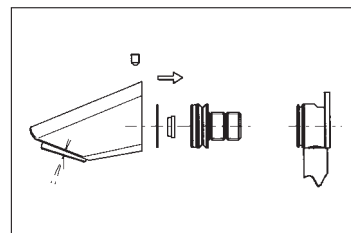
Pomme de douche TC (I)



Pomme de douche PAP (J)



Montage limiteur de débit (K)



Courbe de débit (L)

