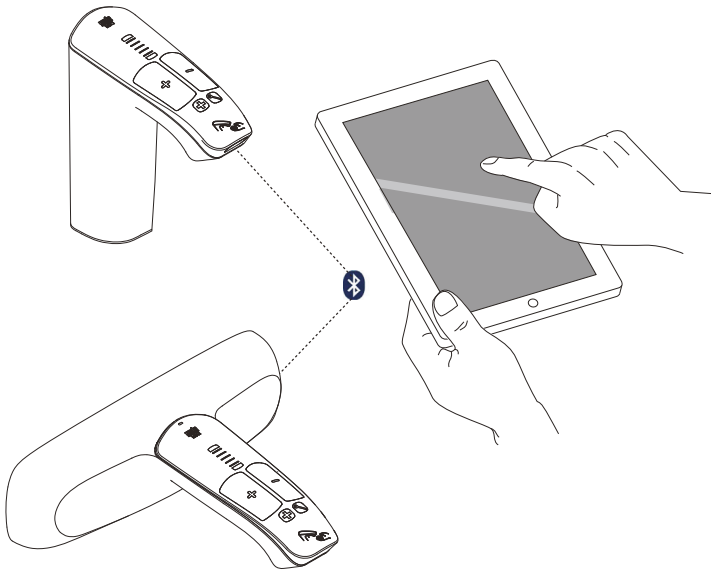


Rada Programmer

Quick Start Guide



Quick Start Guide

Please leave these instructions with the user



General

In order to perform such functions as thermal disinfection and duty flush it is essential that the time and date programmed on the tap is accurate. Failure to do so will result in the datalogging function being compromised.

This App Quick Start Guide is designed to instruct the user to initially set up the tap with time and date, a tap name, network address and a unique PIN. These parameters can all be set up without altering the factory setting functionality of the tap.

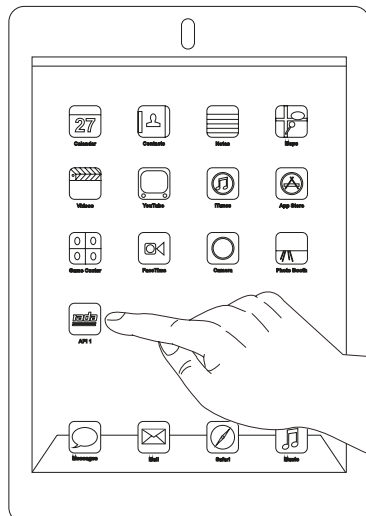
Download the “**RADA AP1**” via the Apple App store onto your compatible device.

Note: This App is designed to operate on Apple iPad. Not all Apple devices are compatible, please ensure you are using up to date Apple Operating System.

Rada endeavour to ensure that the Rada App is compatible with the latest versions of Apple Operating Systems. If your device is not capable of running the latest version of Operating System, the Rada App may **NOT** be compatible with your device.

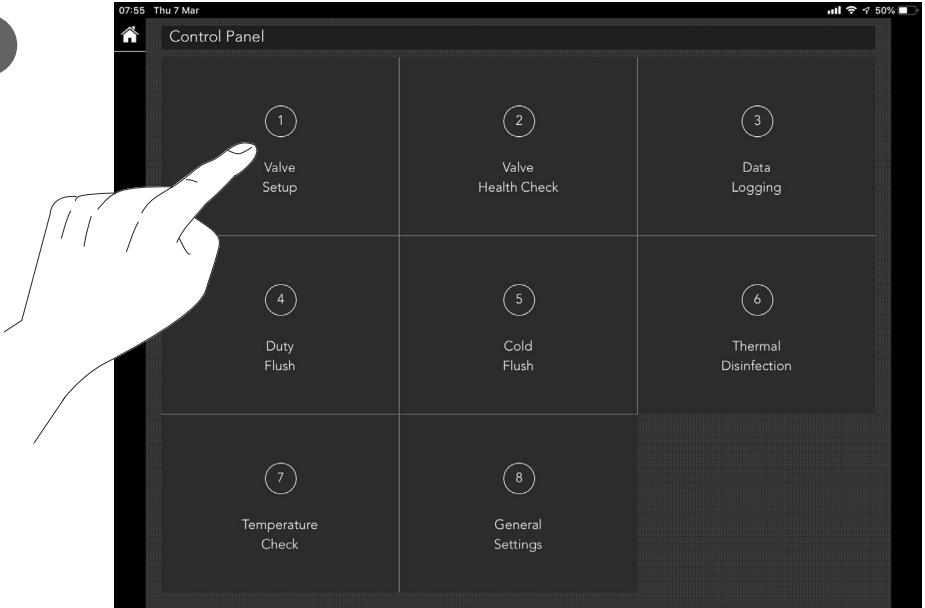
Note: Every Rada tap is factory set with the default PIN **5945**. This default PIN allows the user to alter factory settings, e.g. maximum blend temperature or tap run on time and to download data from duty flush and thermal disinfection data logs. The Rada App allows the user to set an individual PIN for every device. Once a PIN has been altered it is the user’s responsibility to remember or record this PIN for future use. Failure to enter a valid PIN will result in the tap being locked and unable to download any data or alter subsequent settings.

Launch the Rada App

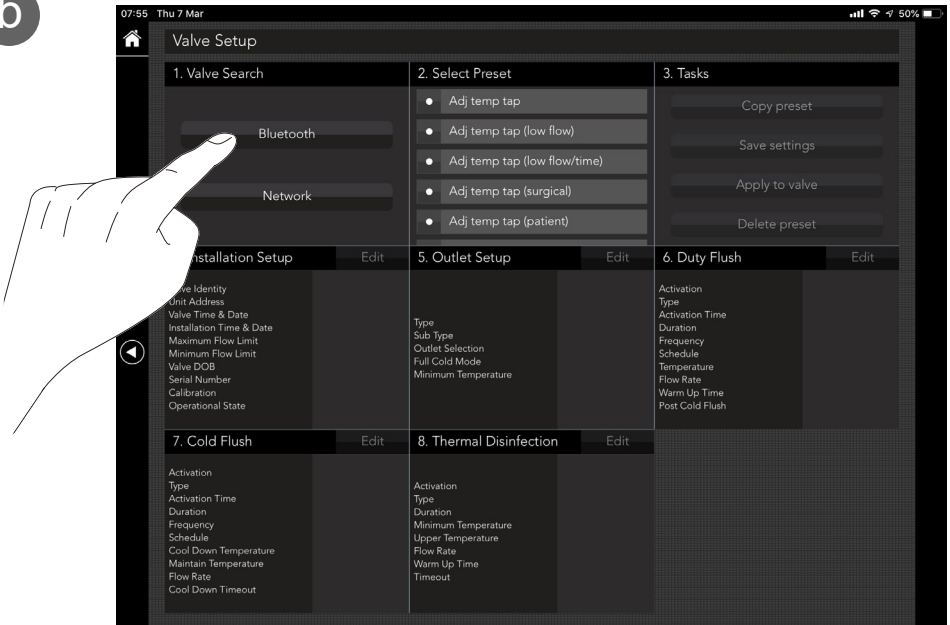


1 Name/Identify the Valve

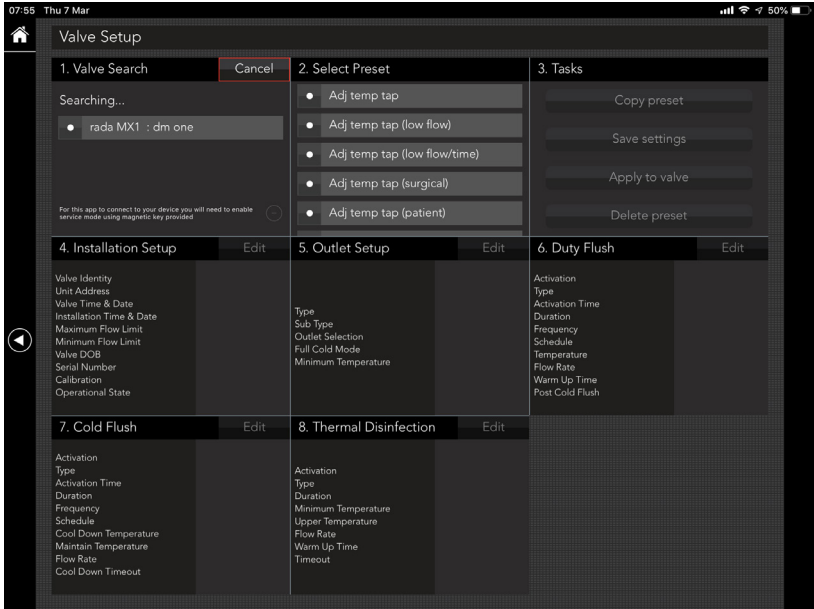
a



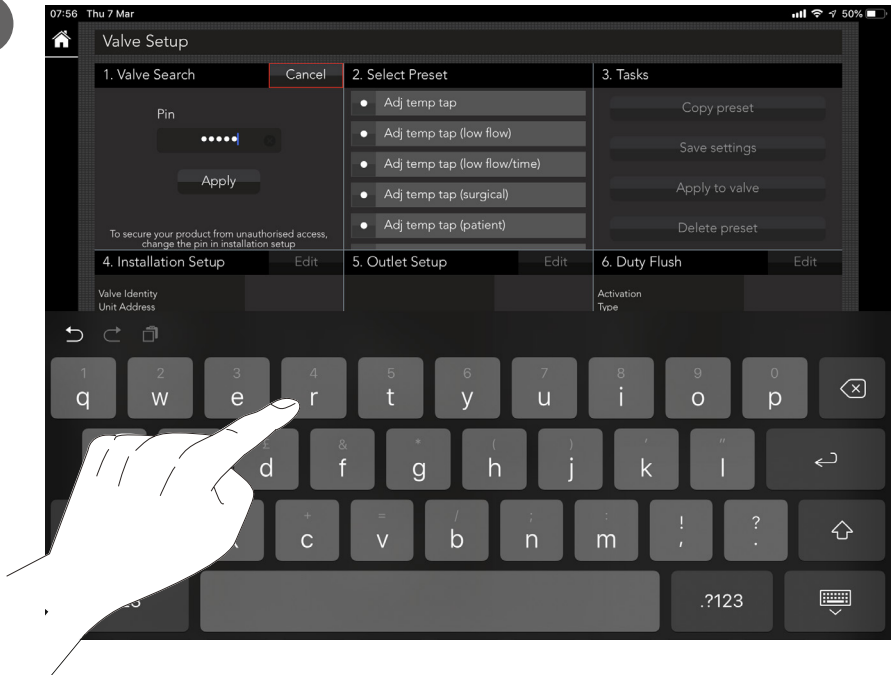
b



C



d





07:56 Thu 7 Mar

Valve Setup

1. Valve Search

Connecting...

Cancel

2. Select Preset

- Adj temp tap
- Adj temp tap (low flow)
- Adj temp tap (low flow/time)
- Adj temp tap (surgical)
- Adj temp tap (patient)

3. Tasks

- Copy preset
- Save settings
- Apply to valve
- Delete preset

4. Installation Setup

Edit

- Valve Identity
- Unit Address
- Valve Time & Date
- Installation Time & Date
- Maximum Flow Limit
- Minimum Flow Limit
- Valve DOB
- Serial Number
- Calibration
- Operational State

5. Outlet Setup

Edit

- Type
- Sub Type
- Outlet Selection
- Full Cold Mode
- Minimum Temperature

6. Duty Flush

Edit

- Activation
- Type
- Activation Time
- Duration
- Frequency
- Schedule
- Temperature
- Flow Rate
- Warm Up Time
- Post Cold Flush

7. Cold Flush

Edit

- Activation
- Type
- Activation Time
- Duration
- Frequency
- Schedule
- Cool Down Temperature
- Maintain Temperature
- Flow Rate
- Cool Down Timeout

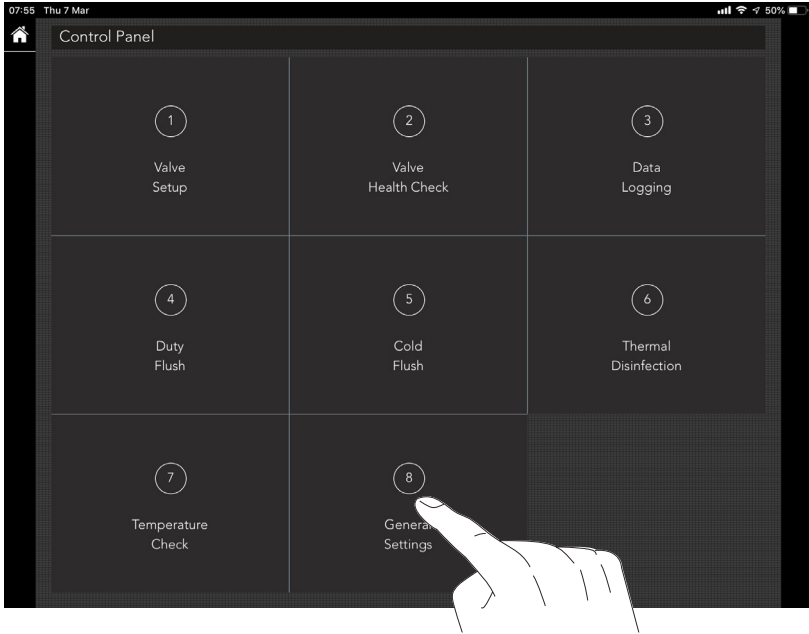
8. Thermal Disinfection

Edit

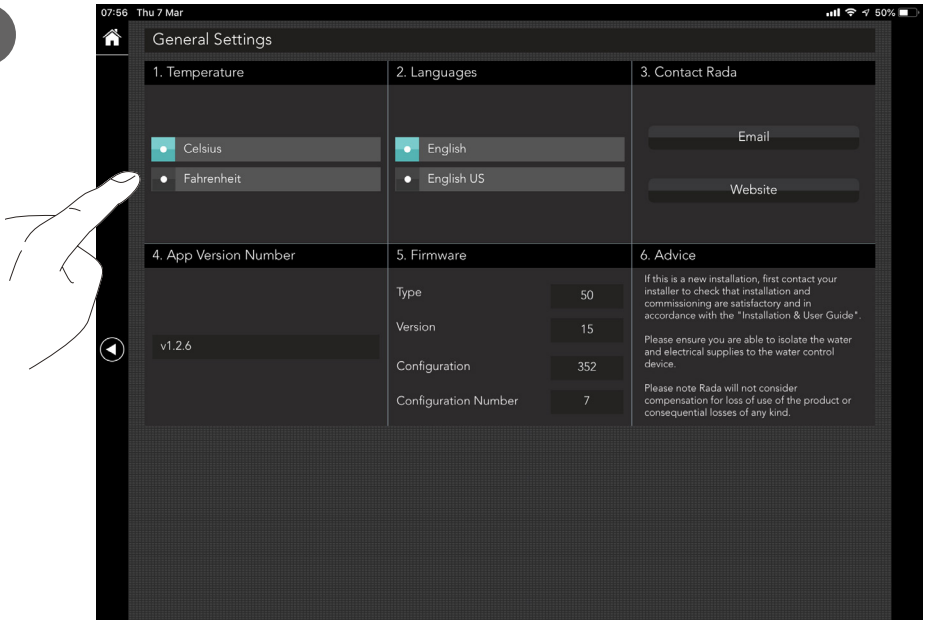
- Activation
- Type
- Duration
- Minimum Temperature
- Upper Temperature
- Flow Rate
- Warm Up Time
- Timeout

2 Amend General Settings

a



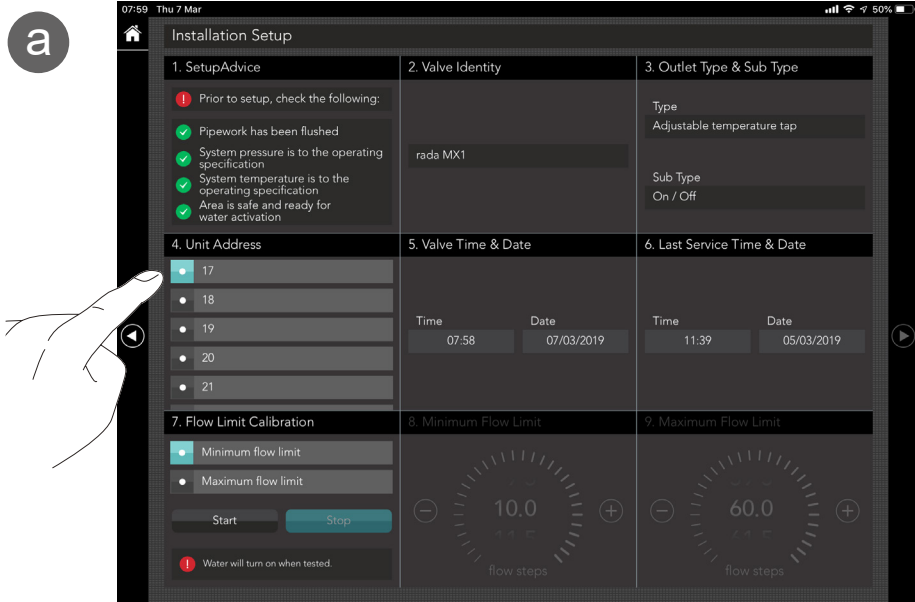
b



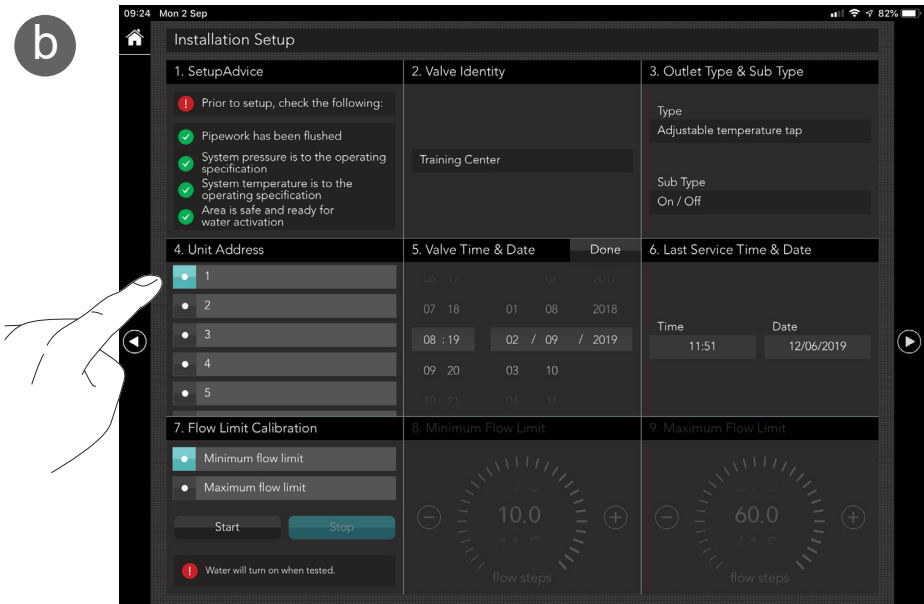
3 Installation Setup

The Rada Tap is given a factory default network address of 17. You can reassign the tap with a Unit Address between 1 and 31. If networking a series of Taps each tap **MUST** be given a different Unit Address in order to be recognised on the network. It is best practise to start from Address 1.

a

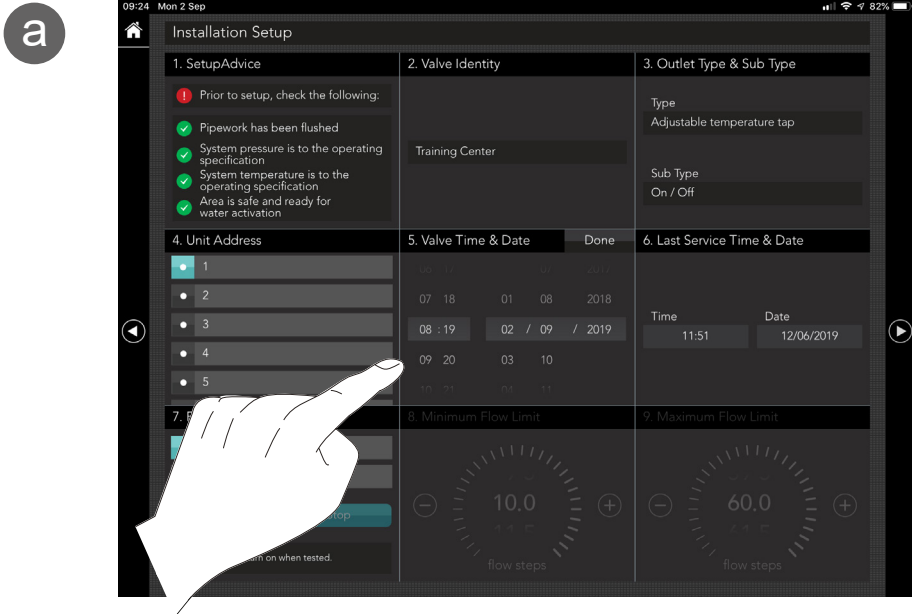


b



To Change the Time and Date

Note: In order to perform such functions as thermal disinfection and duty flush it is essential that the time and date programmed on the tap is accurate. Failure to do so will result in the datalogging function being compromised.



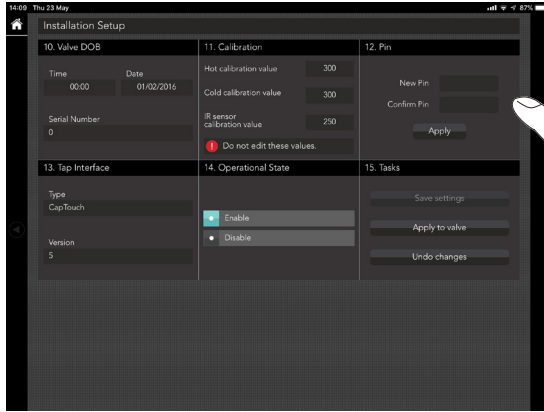
Once the Valve time and Date have been set. Click “Done”.

4 Change the Default PIN

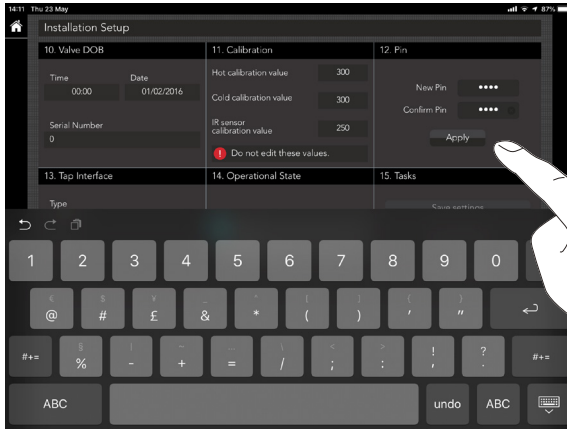
Note: Every Rada tap is factory set with the default PIN **5945**. This default PIN allows the user to alter factory settings, e.g. maximum blend temperature or tap run on time and to download data from duty flush and thermal disinfection data logs. The RadaApp allows the user to set an individual PIN for every device. Once a PIN has been altered it is the user’s responsibility to remember or record this PIN for future use. Failure to enter a valid PIN will result in the tap being locked and unable to download any data or alter subsequent settings.

To alter the Taps unique PIN navigate to Installation Setup screen two.

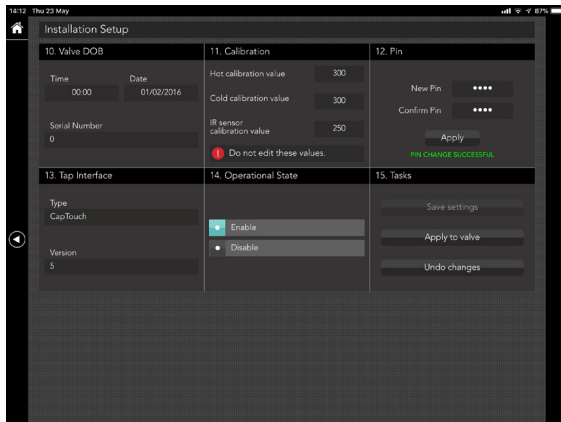
a



b



c



Notes

Customer Service

Your product has the benefit of our manufacturer's guarantee which commences from date of purchase or from the date of commissioning when product commissioning has been conducted within the UK by the Rada Commercial Field Service Team.

Outside of the UK please contact your local agent for all guarantee terms and conditions or visit www.radacontrols.com for further information.

For UK (only) Customer Service & Post Installation enquiries, including details of the Rada Commissioning, Responsive and Maintenance Contract Service Packages please contact:



0344 571 1777



01242 282595



radacustomerservices@mirashowers.com



www.radacontrols.com



Rada Controls, Cromwell Road, Cheltenham,
Gloucestershire GL52 5EP

For UK (only) Pre-Specification Enquiries please contact:



0344 571 1777



01242 282595



rada_technical@mirashowers.com



www.radacontrols.com



Rada Controls, Cromwell Road, Cheltenham,
Gloucestershire GL52 5EP

For Eire Only



01 531 9337



CustomerServiceEire@mirashowers.com

*Rada is a registered trade mark of Kohler
Mira Limited.*

*The company reserves the right to alter
product specifications without notice.*



rada